



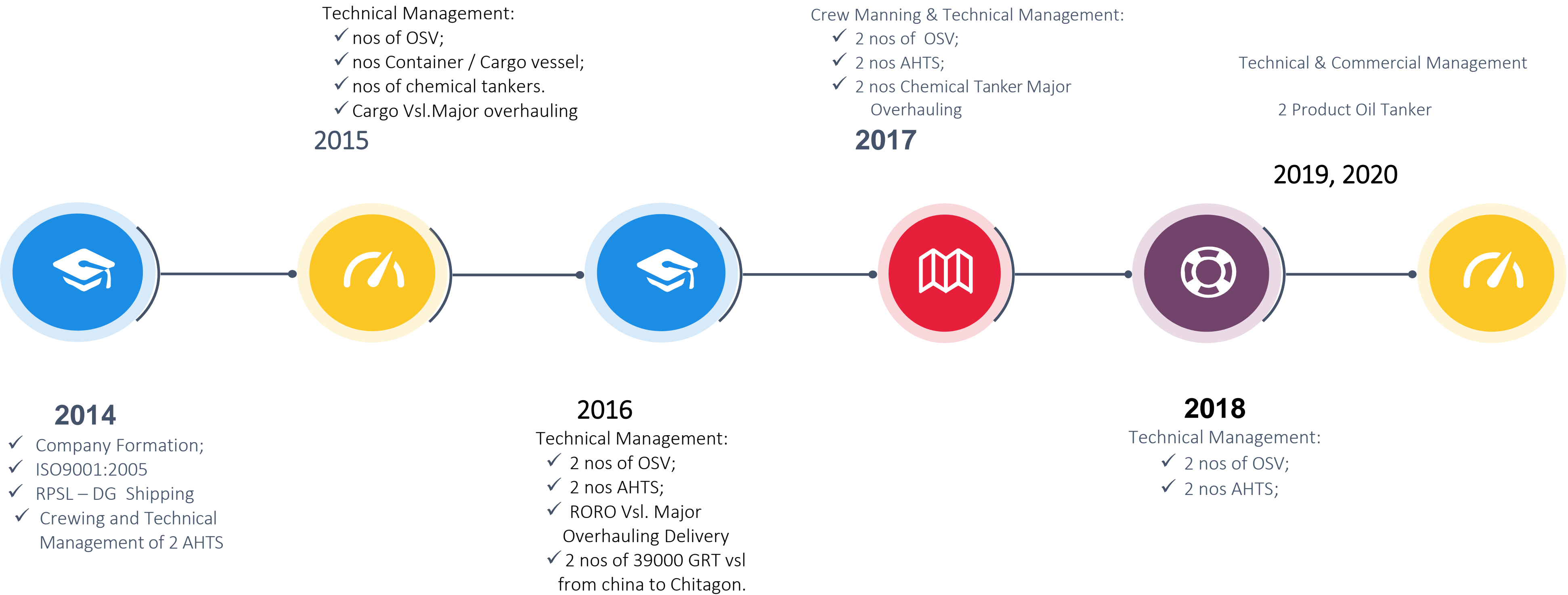
# ASMS

*ASMS ALAMGIR SHIP MANAGEMENT & ENGINEERING SERVICES, PVT.LTD*



# Company Timeline

## Basic Subtitle



# Ship Management Technical & Engineering Services

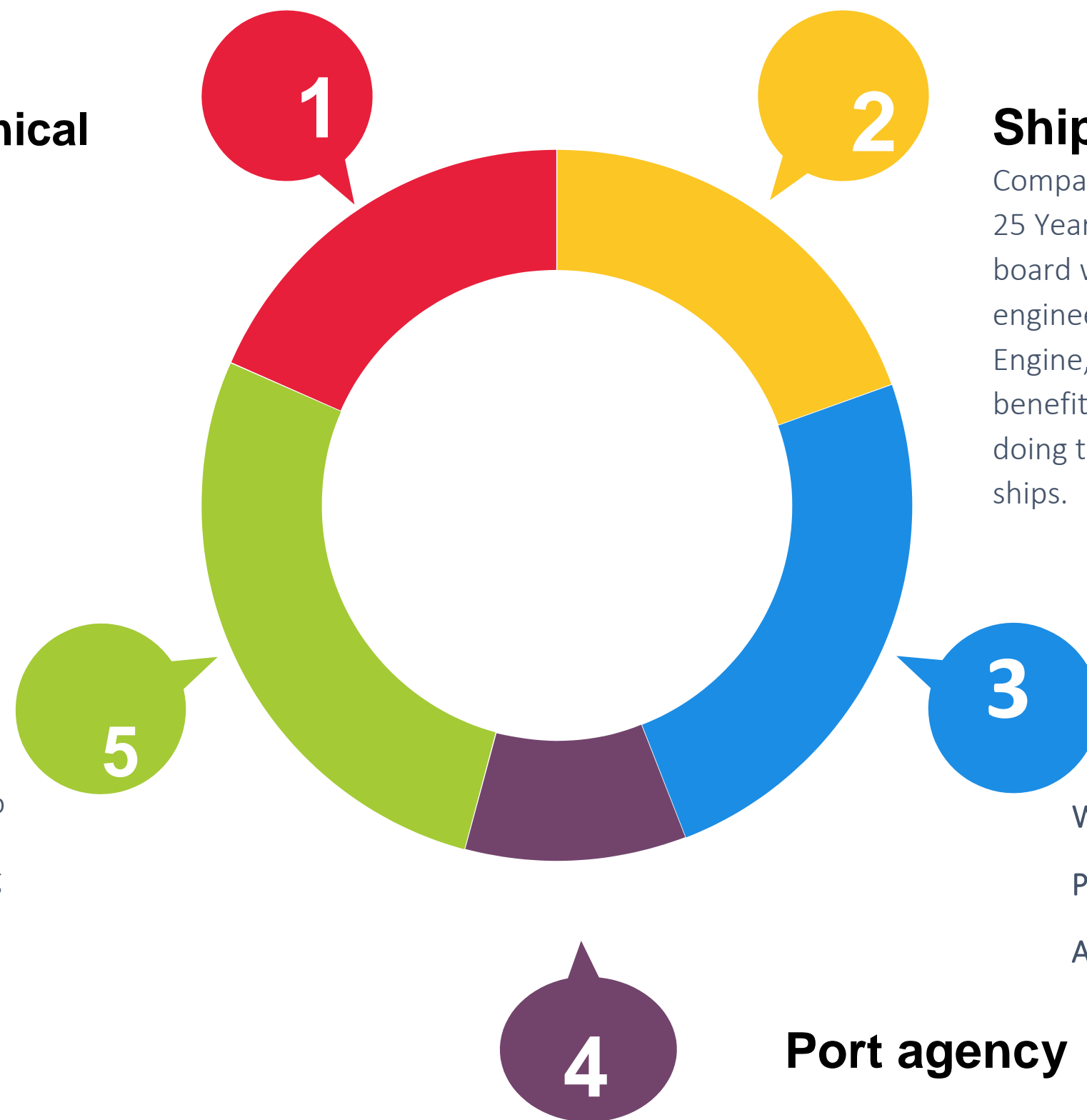
## Service Offered

### Ship Management & Technical

We are in the business of delivering Excellence in safety & ISM and operational Performance on your ships.

### Off shore Logistics

Providing the full range of husbandry and Operational support to vessels engaged in installation, survey and other offshore work including securing work permits and vessel clearances, arranging crew and spares movement, organizing local supplies and Technical support and attending to medical and other emergencies etc.



### Ship Repairs & Supplies

Company CEO is the Marine Engineer almost 25 Years as working as Chief Engineer on board with company highly qualified engineering teams. Successfully Repair Main Engine, Electrical & Dry Docking is great benefit for Ship Owners. Also Company is doing the repair for Indian defense and naval ships.

### Crew Management

We thrive to provide the industry's brightest and finest Professionals who take an innovative approach to overcome Any hurdles that our clients face

### Port agency

Providing smooth & efficient handling of all owners or Charters husbandry & Operational requirements on Vessels calling at port throughout the Middle East and worldwide

# About Us

## Vision & Mission



**Our Vision:** Our aim is to become the leading regional shipping company that drives innovation, delivers dependable solutions and builds lasting relationships that bring real value to our clients.



**Our Mission:** Through our state-of-the-art facilities and innovative new technologies, we are committed to offer a full line of new building, repair services for Indian Naval Ship and Commercial vessels and a tailored service offering to the Oil & Gas industry and Main field.



**Our Values:** Quality, Innovation, Partnership, Business Strategy, Economic Intent.

Vision

Mission

Values

# Vision & Mission

## Our Values

### QA & QC

M/s ASMS Quality Management Systems are certified by Indian Register of Shipping IRCLASS (IRQ) Accredited by (ANAB) (NABCB) Certification as meeting the requirements of ISO 9001:2015. The quality assurance and quality control functions are undertaken by the relevant sections within Quality Department to ensure that the overall company quality objectives are fulfilled and that product and services quality requirements are achieved. Quality Policy is set by the senior management and followed down

within the company. A fundamental element of the company Quality Policy is that each employee is responsible for the quality of the work they do, ensuring that company builds quality into its products and services from the outset. The Quality Department, by a process of audits and inspections, ensures both compliance with the company quality policy and conformity to the specific quality standards. Processes are governed by formal quality documentation.






# ASMS Certification

## Basic Subtitle



  
**ROC**  
Company Registered at  
Mumbai ROC

Issued by Indian Register Quality Systems  
(A Division of IRCLASS Systems and Solutions Private Limited)

This is to certify that the Quality Management Systems of

**Organisation:** ASMS Alamgir Ship Management & Engineering Services Private Limited

**Address:** Office No. 2, Rex Chambers, Co. Op. Society L.L., Ground Floor, W. H. Marg, Ballard Estate, Mumbai - 400 001

has been assessed and found conforming to the following requirement

**Standard:** ISO 9001:2008

**Scope:** Recruitment and Placement of Seafarers as per Maritime Labour Convention 2006, Part 1.4

**Certificate No.:** IRQS/1610447-A

This Certificate Supersedes our Previous Certificate no. IRQS/1510299-A dated 8<sup>th</sup> April 2015

**Original Certification Date :** 03/07/2014  
**Current Date of Granting :** 02/06/2016  
**Expiry Date :** 02/07/2017

Shashi Nath Mishra

  
**IR Class**  
Quality Management  
System

**STORE DETAILS CERTIFICATE**

(Valid From 02/11/2016 to 01/11/2018)


ANNEXURE TO GOVERNMENT PURCHASES ENLISTMENT CERTIFICATE  
NO. NSIC/GRAND/2016/0024204 D.T. 02/11/2016  
ISSUED TO **Mrs. ASMS ALAMGIRSHIP MANAGEMENT & ENGINEERING SERVICES PVT.LTD.**, MAHARASHTRA

OFFICE NO.2, REX CHAMBERS PREMISES CO-OP SOC LTD GR.FLOOR, W.H.MARG, BALLARD ESTATE, MUMBAI CITY, MAHARASHTRA-400001

S.No/Store/Slp/Service(s) Name	Specification(s)	Qualitative Capacity	Quantitative Capacity P.A.
1 SERVICE ACTIVITY RELATED TO:- SHIP MANAGEMENT AND TECHNICAL SERVICES LIKE-CREW MANAGEMENT, GENERAL SHIP REPAIRING, DECK AND ENGINE REPAIR JOB WORKS	N/A	N/A	4 NOS OF PROJECT/SERVICES

Inspection agency comments/Note (Optional) :-

Mrs. ASMS ALAMGIRSHIP MANAGEMENT & ENGINEERING SERVICES PVT.LTD. Authorized Signatory  
"Authenticity of the certificate can be checked through the web portal: [www.nsicsonline.com](http://www.nsicsonline.com)"

  
**NSIC**  
Store Details Certificate

  
**NSIC**  
Government Purchase  
Enlistment Certificate

Branch Office : 3A 3rd Floor Gundecha Onclave, Kherani Road Sakinaka, Andheri (E) Mumbai - 400 072  
Ph : 022-28509916 Fax : 022-28509917  
Email : [boardhead@nsic.co.in](mailto:boardhead@nsic.co.in) Website : [www.nsic.co.in](http://www.nsic.co.in)

**GOVERNMENT PURCHASE ENLISTMENT CERTIFICATE**

(Valid From 02/11/2016 to 01/11/2018) Date: 02/11/2016

Ref.No NSIC/GRAND/2016/47823

**Mrs. ASMS ALAMGIRSHIP MANAGEMENT & ENGINEERING SERVICES PVT.LTD**  
OFFICE NO.2, REX CHAMBERS PREMISES CO-OP SOC. LTD. GR. FLOOR, W.H. MARG, BALLARD ESTATE, MUMBAI CITY, MAHARASHTRA-400001

**Factory Address:** 1. OFFICE NO.2, REX CHAMBERS PREMISES CO-OP SOC. LTD. GR. FLOOR, W.H. MARG, BALLARD ESTATE, MUMBAI CITY, MAHARASHTRA-400001

**Name of the Directors**  
1.MR.ALAMGIR HUSSAIN SHAIKH  
2.MR. NAGESHVAR ALAMGIR SHAIKH

Qualification of Registration under Single Point Registration Scheme. Units registered under this scheme are considered to be at par with those registered directly with CGS & D.

**Constitution of the firm-Private Limited**  
GOVERNMENT PURCHASE REGISTRATION NO: NSIC/GRAND/2016/0024204  
Monetary Limit: ₹ 6 lakhs ( ₹ Six Lakh Only)  
TURNOVER (Rupees In Lakhs)

Financial Year	Annual Turnover
2014-15	12.98
Monetary Limit	6

Your name has been registered as a SBI Unit eligible for participation in the Central Government Store Purchase Programme as per the Single Point Registration Scheme for the following item(s)/store (s)/service(s).

Name of the Store(s)/Service(s)	Specification(s)	Qualitative Capacity	Quantitative Capacity P.A.
*As per List Attached (1 Item only)			

Mrs. ASMS ALAMGIRSHIP MANAGEMENT & ENGINEERING SERVICES PVT.LTD Authorized Signatory  
"Authenticity of the certificate can be checked through the web portal: [www.nsicsonline.com](http://www.nsicsonline.com)"

  
**MBPT**  
MBPT Dock Entry Permit

**MUMBAI PORT TRUST**

REGISTRATION SLIP FOR ISSUE OF DOCK ENTRY PERMIT

**COMPANY NAME :** ASMS ALAMGIR SHIP MANAGEMENT AND BUSINESS : Shipping Agent  
**PERMIT QUOTA :** YEARLY MONTHLY  
**REGISTRATION NO. :** A0628  
**VALID TILL :** 28/06/2019  
**NO / DATE :** 6586-15/10/2016  
**CHARTER NO.:** 14803 01/07/122016

VALID FOR TRANSPORT MANAGER

For: TRANSPORT MANAGER

1. Registration is granted/extended/renewed to following condition:  
1. This Administration reserves the right to cancel Registration applied for or granted without assigning reason.  
2. In the event of breach of Dock Entry Permit registration is liable for cancellation.  
3. The permit holder shall be responsible for the validity of the permit from the expiry date, and for renewal as ORDER.

Ref. No. DEP - 21 / 354 of 2016-2017  
Dated : 18/11/2016

  
**Business**  
Certificate of  
Establishment

1.Registration No. : 762094564 / COMMERCIAL II Ward A  
2.Name of the Establishment : ASMS ALAMGIR SHIP MANAGEMENT & ENGINEERING SERVICES PVT. LTD.  
3.Name of the Employer : MR. ALAMGIR HUSSAIN SHAIKH, MR. NAGESHVAR SHAIKH  
4.Nature of Business : SHIP MANAGEMENT, SHIP REPAIRS/SHIP CHANDLERS  
5.Postal Address of the Establishment : OFF. NO.02,GROUND FL,REX CHAMBERS PREMISES CO-OP SOC.LTD.,WALCHAND HIRACHAND MARG, BALLARD ESTATE, MUMBAI, 400001, Maharashtra, India.  
6.Previous Registration Certificate No. : 0760419643 / COMMERCIAL II PS Ward

Office of the Inspector Under Maharashtra Shops and Establishments Act, 1948.

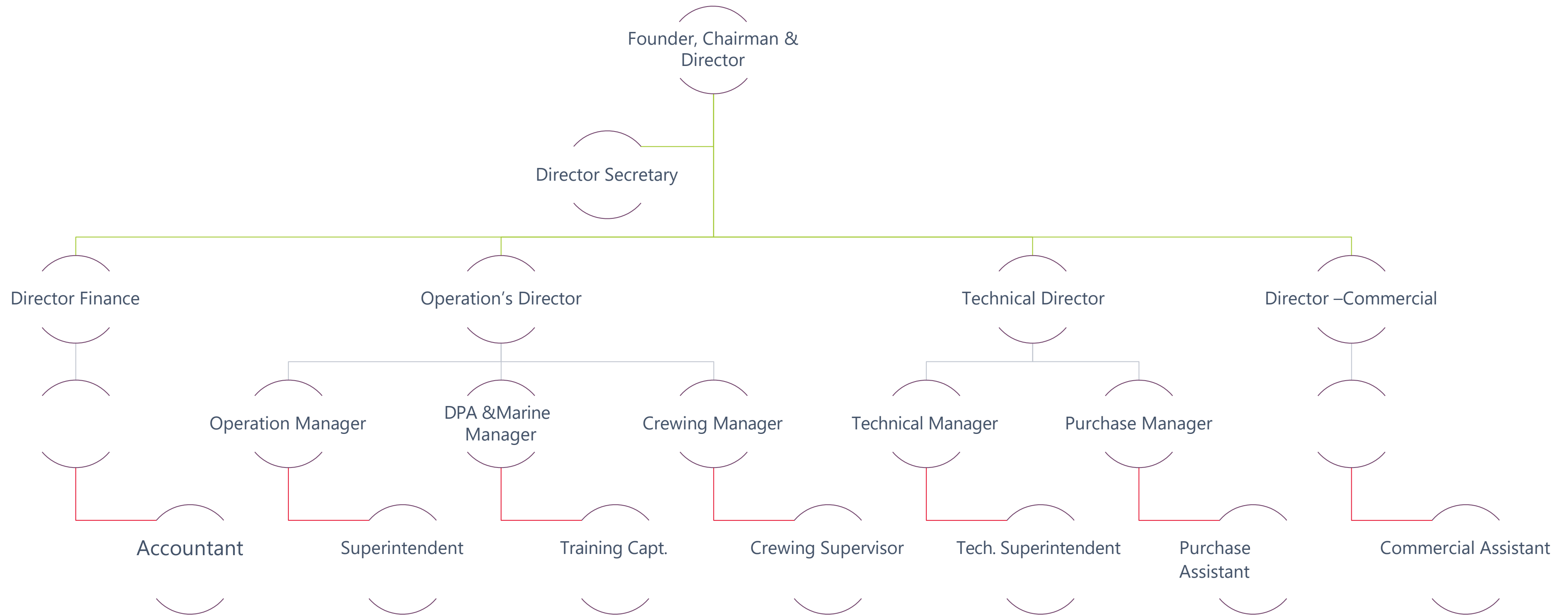
It is hereby Certified that the above establishment has been registered as a COMMERCIAL II under the Maharashtra Shops and Establishments Act, 1948, this 27 day of July, 2016.

R. 27July,2016

Year	Receipt No. and Date	Description	Fee Paid	No of Empl	Sign of the Inspector under the M.S&S Act, 1948

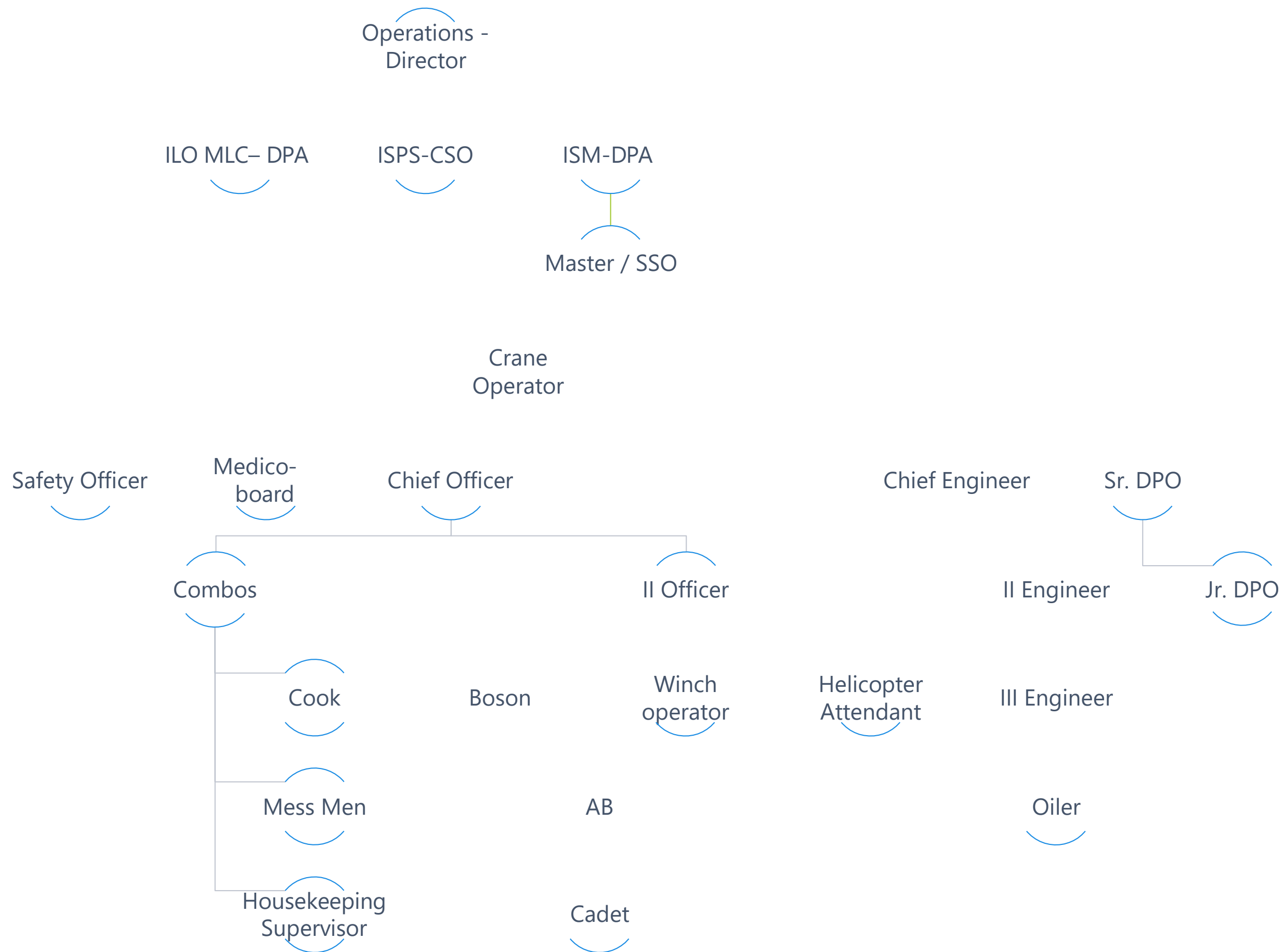
# Organization Chart

## Shore base management



# Organization Chart

## Vesselmanagement





# SERVICES

*ASMS ALAMGIR SHIP MANAGEMENT & ENGINEERING SERVICES, PVT.LTD*

- Ship Management;
- Crew Management;
- Technical Management;
- Ship repairing;
- Spares re-conditioning;
- Dry-docking assistance;
- Regulatory Compliance;
- Port / Charterer Agency;
- Offshore Logistics;
- Delivery of the Vessel for Scrap and Demolitions;
- ISM, ISPS & ILO MLC 2006 Documentation and assistance in certification;
- ISO 9001:2015, ISO 14001:2015 and OHSAS 18001 & 45001 Documentation and assistance in certification;





# Major Activities

## Ship Management

We provide ship management, Shore-base management, consultancy and technical services for ship owners and third parties internationally.

We understand your priorities in challenging economic times, to achieve operational efficiency without compromising on safety, environment, health and reliability.

That is why – if you are looking to outsource your shore-base and vessel operations support services – you can turn to us with confidence.

Our experienced and committed management team oversees the quality delivery of services that include:

- Technical & Commercial Management of Vessels
- ISM, ISPS, MLC2006, ISO9001, ISO14001 and OHSAS18001 compliance
- Sourcing and recruitment of crew
- Purchasing
- Accounting
- Payroll management
- Technical services, including audits and surveys
- Detailed financial reporting that aligns with your requirements
- Dry Docking, Repair, Survey and Classification, insurance, P&I and H&M

Our highly-skilled team of professional engineers and technicians applies innovative solutions to meet – and overcome – the toughest challenges.

If you are looking for exceptional technical support, or reliable crew management and Technical management services – or both – then ASMS Ship Management is ready to provide a focused and dedicated solution.

You can trust us to support safe and profitable vessel operations.





# Ship Management

## Technical Management

ASMS is a leading global maritime service provider, specializing in the outsourced technical management of high value maritime assets and the provision of a wide-range of high value supporting technical, workforce and commercial services.

- ❑ ASMS provides full Technical Management services to a fleet.
- ❑ Our worldwide teams ensure that these vessels are operated in a safe, reliable, efficient and compliant fashion.
- ❑ Our skilled technical teams monitor vessel performance and condition through regular reporting from the ships and detailed on-board inspections.
- ❑ Our Ship Energy Efficiency Management Plan is recognized as one of the most detailed in the industry.
- ❑ This ensures that owners get the greatest value from their assets which are fully maintained, surveyed and audited to comply with all national and international legislation.
- ❑ Or, in house, integrated ship management software PM Engineer, includes a modern Planned Maintenance System which allows cost effective planning of maintenance work and planning of spares purchases.
- ❑ Detailed running cost reports are prepared to ensure that owners are kept fully informed of the financial position, and regular meetings are held with owners to discuss both the technical and financial aspects of the vessel performance.

- ❑ This also allows us to propose upgrades to owners in order to comply with future legislation and maximize efficiency.
- ❑ Management of the supply of stores and spares in a prompt and economic manner is one of the keys to good management.
- ❑ Our worldwide purchasing network is also ideally placed to maximize leverage of our buying power to obtain significant discounts.





# Ship Management

## Regulatory Compliance

### Increasing Regulatory Demands:

The regulatory requirements with which vessel owners are required to comply are continuing to become more stringent, as well as increasing in overall number and breadth of coverage. Significant legislation coming this way or on the horizon includes ballast water treatment systems and Electronic Charts. The recently implemented Maritime Labor Convention (MLC 2006) is facing fundamental difficulties due to varying interpretations of who is the 'Ship-owner' by the flag administrations.

The self-management of new regulation continues to become more difficult, costly and time-consuming for vessel owners. It clearly makes sense to pass the responsibility for regulatory compliance to experienced external ship managers who possess the necessary specialist knowledge and compliance control systems.

### Regulatory Compliance:

As the leading global independent ship management company, ASMS possesses an exemplary track-record of maximizing the operational efficiency physical condition of its managed vessels in strict compliance with the international and national regulations and the requirements of its customers.

In addition to international and national regulations, the Company must also satisfy particular compliance requirements of certain end-customer groups, notably the oil companies who are the ultimate customers of some of ASMS ship owning customers. The oil majors have strict internal and external operational safety requirements that may go beyond industry requirements and regularly undertake vessel inspections (known as "vetting"). They typically also require a minimum level of officer experience above required by international regulations.

ASMS's industry-leading standards of service delivery and regulatory compliance across the organization are maintained through the ASMS electronic Integrated Management System. This comprises a series of detailed policy and procedure manuals which set out for employees and crew how the Company should conduct its business on strict accordance with all relevant international and national regulations and customers' requirements. ASMS also has a dedicated team responsible for monitoring new regulatory developments and providing compliance.





# Major Activities

## Ship Management

Ship Management is our core business and we are providing ship management, Technical & commercial Services to ever higher levels of competence. As part of this continuous process of improvement we have implemented a Quality Management System compliance with ISO 9001:2015 Standards.

Ship management encompasses a broad range of activities covering the recruitment and selection, deployment, training and ongoing management of the officers and ratings engaged on vessels under full management contracts. Information relating to the engagement of seafarers according to national and international regulations and the specific needs of ship owning clients. Our Fleet Personnel database is not just about building numbers but building relationships. Our personalized service to seafarers includes being in constant contact, and monitoring their certificate requirements during their leave. All of which translates into a high retention rate. Our staff managers are qualified and experienced professionals providing the best services in their domain. We maintain a very comprehensive personal record of our Officers and Crew (both in hard

copies as well as software copies). The crew is evaluated by the head of department and Master on board at 06 months intervals and also by the superintendents during the routine inspections. Our Ship management services are flexible & competitive and cover the complete spectrum of human resource management for the Ship Owner.





# Major Activities

## Ship's repairing and spares reconditioning

Engineering services in the field of repairs and maintenance of ship's automatic systems, control systems and hydraulic drivers, main engine, auxiliaries, ship deck machineries & electrical repairs. We can supply professional welders, repairmen, electrician, service personnel for radio and navigational equipment.

We provide reconditioning for major engine parts to key locations in India & overseas and for some engine models, parts are available on exchange. Ship repair contracting is also offered worldwide. Replacement of generators, pumps, oil purifiers, compressors, Main engine and other shipboard equipment, is our specialty.

### Ship's spare parts and equipment supply

We supply a wide range of spare parts for main and auxiliary engines, diesel and hydraulic drives and controls, automatics, electronic and electronic components. We meet emergency demand for any product at competitive price.

For costly main engine parts, we can provide offers from a number of

different sources. Also, we provide all types spares related to engineering and electrical items. We monitor the parts market constantly for quality aftermarket parts, for main engines, generator engines and the auxiliary equipment.

Our knowledgeable team can react immediately to your request and can source and dispatch any spare parts to anywhere in the world at most convenient rates.





# Major Activities

## Delivery of the Vessel for Scrap and Demolitions

M/s ASMS GROUP having special separate crew members and officers for the demo vessels. We are one of the leading ship management company in India and every year we have successfully delivered more than 10 vessels from the various country with economical cost for our all the clients. Also we provide technical assistance & repair to non-operational vessel machinery through our expert repair team.

Port Agency - Providing smooth and efficient handling of all owners or charterer's husbandry and operational requirements on vessels calling at ports throughout the Middle East

Offshore Logistics - providing the full range of husbandry and operational support to vessels engaged in installation, survey and other offshore work including securing work permits and vessel clearances, arranging crew and spares movement, organizing local supplies and technical support and attending to medical and other emergencies etc.

### Our Esteemed clients:

Mumbai Port Trust (MBPT) Shipping Corporation of India Atlas Marine L.L.C  
Indian Navy Marine Cores Charter L.L.C Singapore Tankers Pvt LTD,  
Singapore Dubai Dry Docks Anchor Marine Engineering (UAE) OMGC Anchor  
star shipping LLC. Jadaf Marine LLC. Integrity Ships Pvt. LTD. SIS Shipping &  
Charter LLC, Orkiz & West African shipping company.





# PRODUCTS

**ASMS ALAMGIR SHIP MANAGEMENT & ENGINEERING SERVICES, PVT.LTD**

**Ship & Shore-base Management Software;**

- PROFILER HSEMANAGEMENT
- PROFILER QA(MANUALS)
- PROFILERAUDIT
- PROFILERRISK
- PROFILERPTW
- PROFILER INCIDENT MANAGEMENT
- PROFILER INJURYMANAGEMENT
- PROFILERBBS
- PROFILER STOPWORK

- PROFILER FUELMANAGEMENT
- PROFILER MASTER'S SMSREVIEW
- PROFILER TRAINING MANAGEMENT
- PROFILER MANAGEMENT OF CHANGE(MOC)
- PROFILERISPS
- PROFILER ENVIRONMENT MANAGEMENT
- PROFILERMSDS
- PROFILER MANAGEMENTFORMS
- PROFILEREMERGENCY

- PROFILER DOCUMENT CONTROL
- PROFILER DAILYREPORT
- PROFILERLIBRARY
- PROFILERCONTRACTS
- PROFILERTENDER
- PROFILERCERTIFICATES
- PROFILERPMS
- PROFILER WORK /REST Hrs.

**IT Services**

- Profiler Monitoring &Alerts
- Profiler Outsourcing



# PRODUCTS

## PROFILER – Workplace Safety Management Software

A Complete Solution to Manage Safety Risk, Compliance, and Programs.

**ASMS's** Safety Software Suite is a powerful, intuitive, and flexible software solution that enables organizations to efficiently manage safety risks and compliance items and streamline safety programs. Developed by ASMS's own certified safety professionals with input from our customers, this suite supports a safety management system approach to safety and will help you manage incidents, pro-actively mitigate risks, satisfy compliance requirements, identify problem areas, and track performance.

### Key Benefits of ASMS's Safety Software Suite - PROFILER:

*ASMS's Safety Suite enables organizations to:*

1. Connect with ASMS's other software suites to integrate QHSE functions and promote effective communication and data-sharing between departments and stakeholders.
2. Track performance and identify key risks, trends, and problem areas using Powerful metrics.
3. Streamline incident management workflows and build consistent processes across sites, business units and countries.
4. Manage regulatory compliance to legal and other requirements (for example: *Factories Act in India, OSHA in the U.S. and HSE in teak.*).
5. Support Safety Management Systems compliance (*for example: ISM, ISO 9001, 14001, OHSAS 18001, etc.*).
6. Plan and build effective risk assessment programs: define your work; assess the risks and controls; track the changes in risk as the work changes; and use risk data to improve your performance.
7. Manage all audit and inspection programs to help identify and control risks

and comply with legal and other requirements.

8. Centralize your findings and actions together in one logical interface that is consistent across all Safety Suite modules.
9. Make informed decisions using ASMS's Business Intelligence tools, which include the Dashboard, Metrics, Standard Reports, and a flexible Report Writer.
10. Network with an esteemed group of **QHSE** professionals through ASMS's User Community, User Group Conferences and other educational opportunities.







# Profiler R9

EXIT

Revision : 9.0  
Date : 1st June 2016  
Designed by: Anand Khadse

- Home
- BBS System
- BBS Sync Data
- UA/UC Records
- Near Miss Records
- Level 1 Inves
- Job Safety Analysis
- C.E.F.R
- Non-Conformity
- Weekly Inspections
- Weekly HSE Meeting
- Master Review
- Tool Box Register
- 500 Mtr Records
- Training Records
- Induction Records
- LOA
- S.S.E Records
- Document Change
- Seafarers Details
- Incident DB
- Level 2 Records
- Video Library
- Vessel Activity
- DNA
- Statement Data

BBS CARD	Incident Report	CEFR /Critical Equipment	TASK Inventory	Weekly Inspection	Daily Morning Report
UA/UC	Injury / Illness	Non-Conformity	JSA	Master Review	Fuel Management
Near Miss	Statement Form	CAR Plan	Tool Box Talk	Waste Management	Employee Indu
Hazard Register	Investigation-Level 1	PTW	500 Mtr Checklist	Short Service Employee	Weekly HSE Meeting
LOA	Level 2 Investigation	Document Change	Complaint Register	Crew Details	Training Records
DNA	Incidents Dash Board	MOC	Complaint Form	Towing Log	Defect / Non Critica
					Daily Activ Every
					Comp Data





ASMS

**ASMS ALAMGIR SHIP MANAGEMENT & ENGINEERING SERVICES, PVT.LTD**

**Address:** Eastern Chambers, 3<sup>rd</sup> Floor, Office No.26, Poona Street,  
Dana Bunder, Masjid, Mumbai, Maharashtra 400009.  
[www.asmshipmanagement.com](http://www.asmshipmanagement.com)





















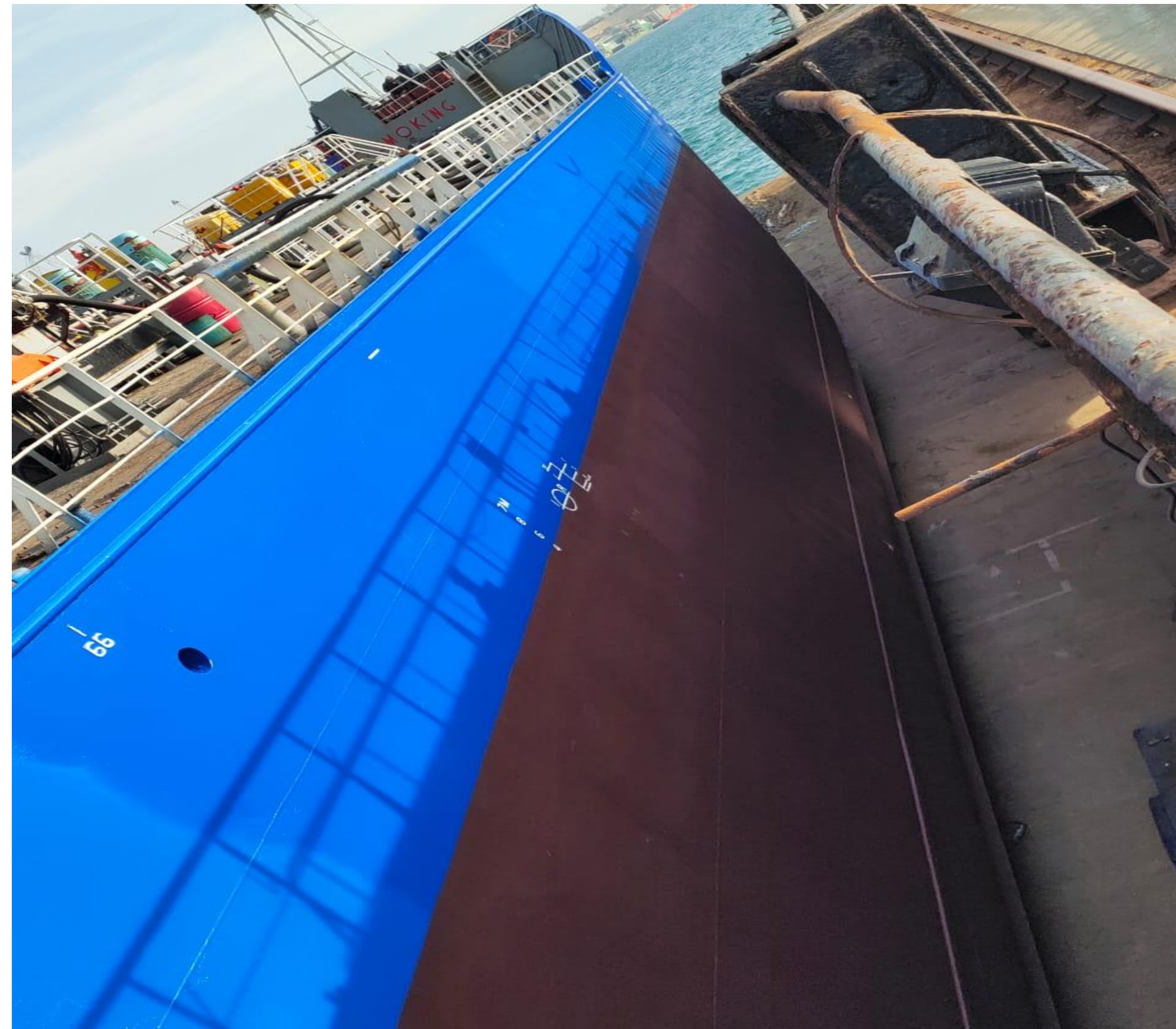
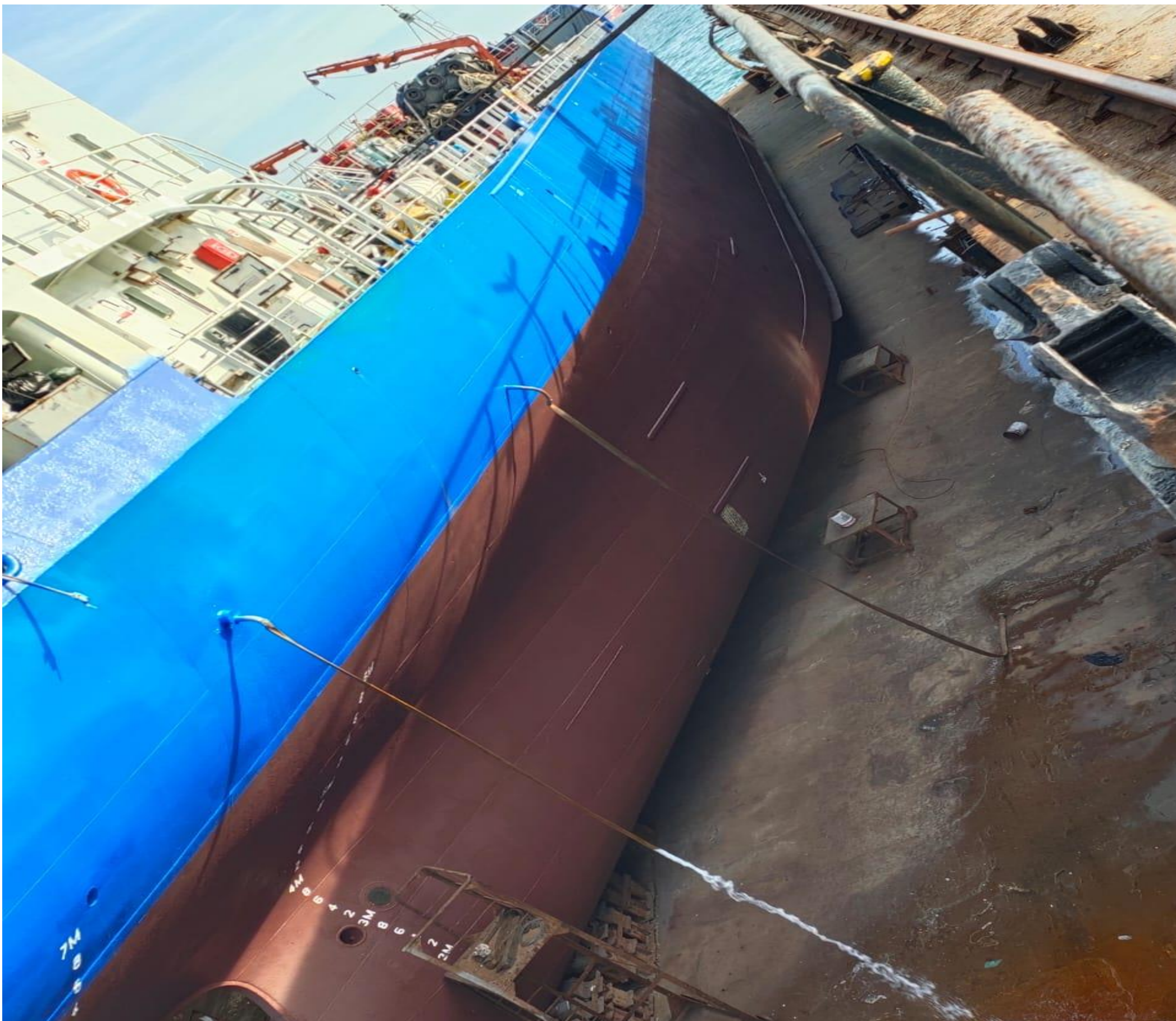












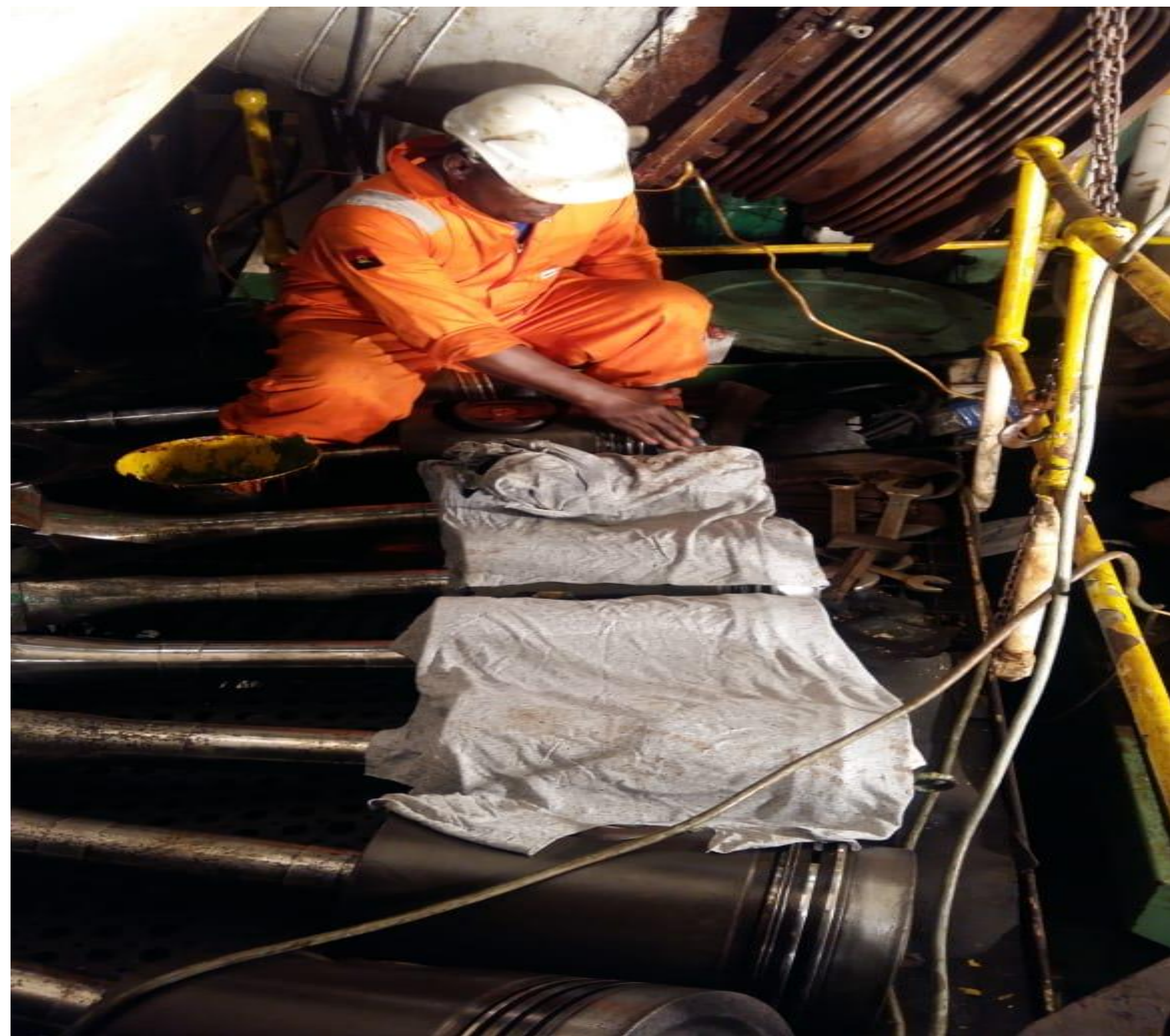
**VESSEL IN DRY DOCKING & SPECIAL SURVEY CARRIED OUT WITH COMPLETE REPAIRS MARCH 2020**





**VESSEL IN DRY DOCKING & SPECIAL SURVEY CARRIED OUT WITH COMPLETE REPAIRS MARCH 2020**





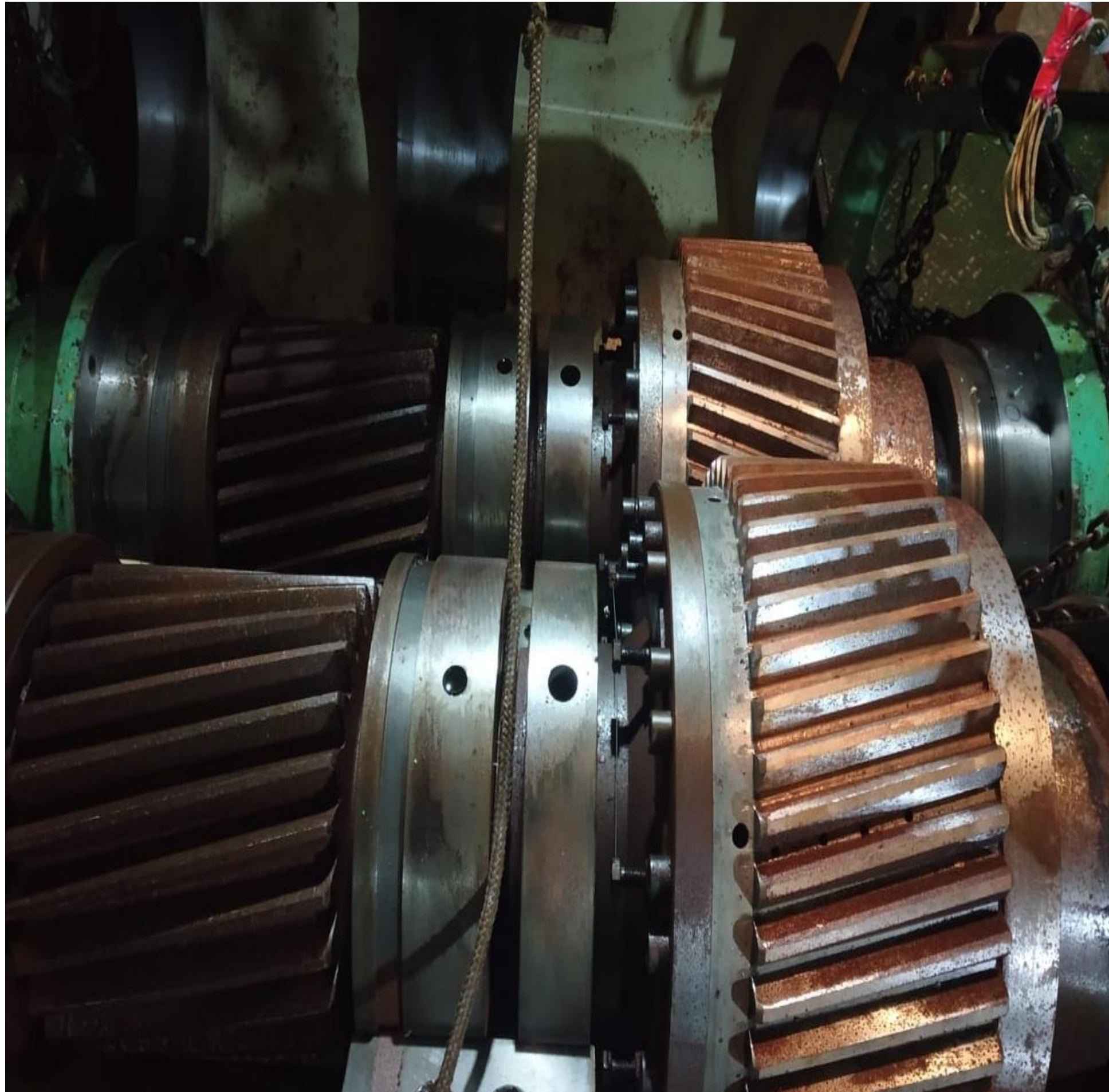


**VESSEL IN DRY DOCKING & SPECIAL SURVEY CARRIED OUT WITH COMPLETE REPAIRS MARCH 2020**





**VESSEL IN DRY DOCKING & SPECIAL SURVEY CARRIED OUT WITH COMPLETE REPAIRS MARCH 2020**





**VESSEL IN DRY DOCKING & SPECIAL SURVEY CARRIED OUT WITH COMPLETE REPAIRS MARCH 2020**





**VESSEL IN DRY DOCKING & SPECIAL SURVEY CARRIED OUT WITH COMPLETE REPAIRS MARCH 2020**

